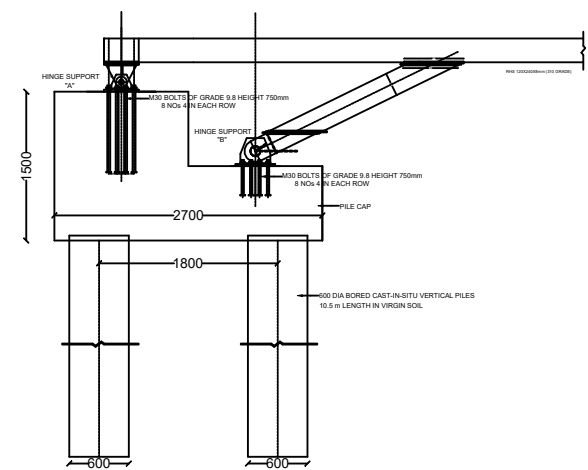
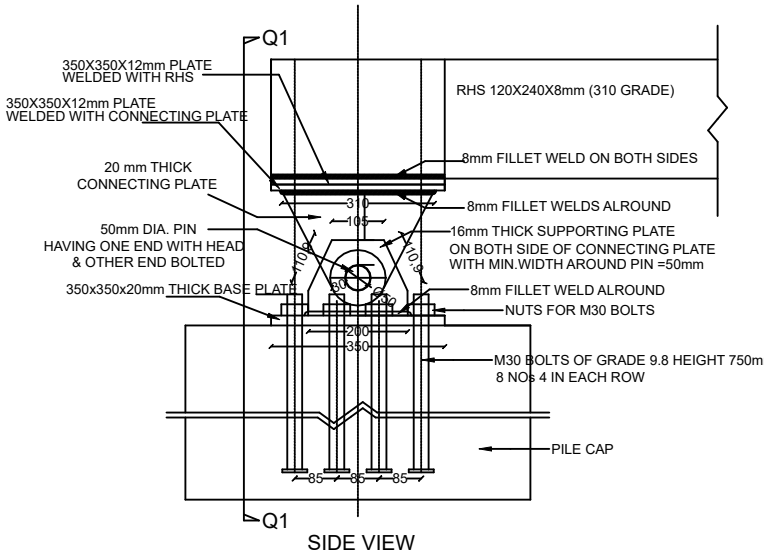


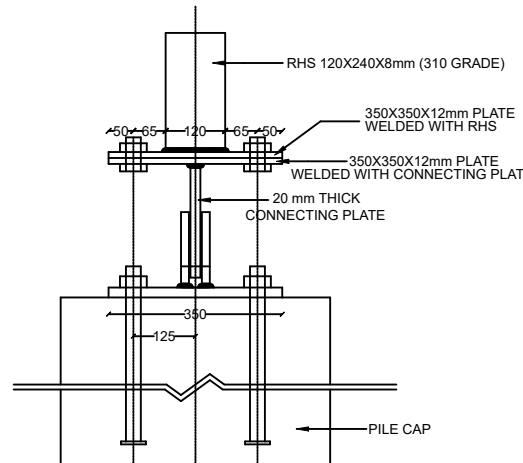
SIDE VIEW OF STRAIGHT FOOT BRIDGE



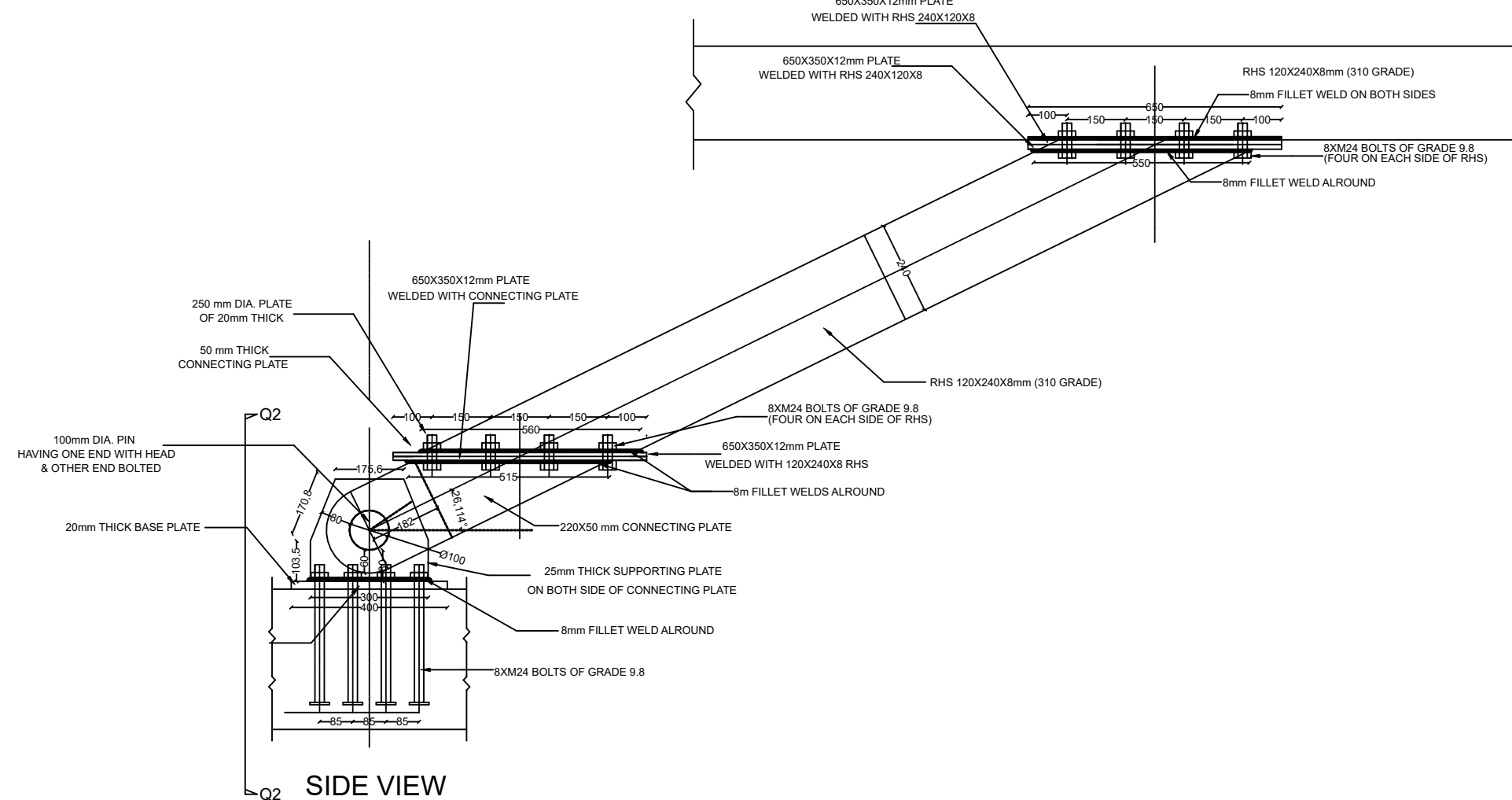
GENERAL ARRNGMENT OF PILE, PILE CAP AND HINGE SUPPORTS



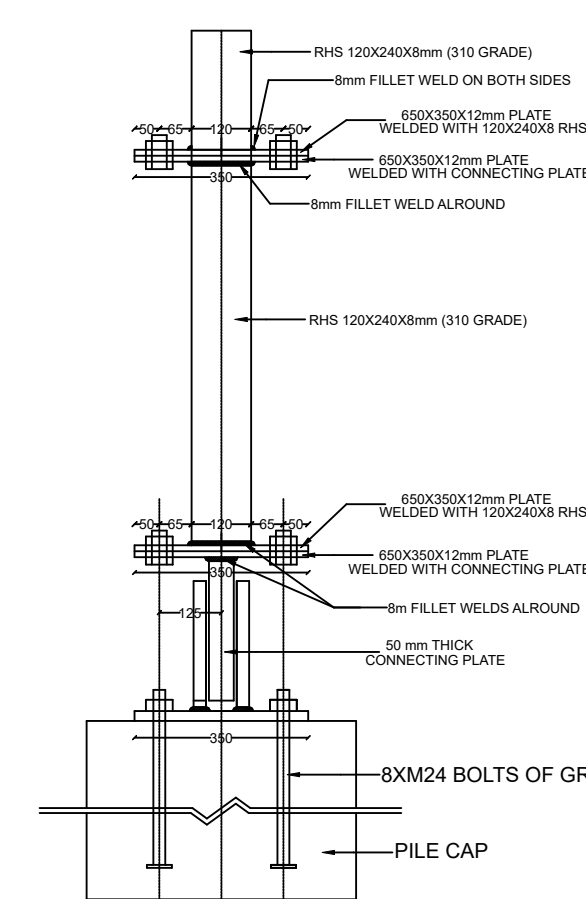
DETAILS OF HINGE SUPPORT AT A



VIEW Q1-Q1



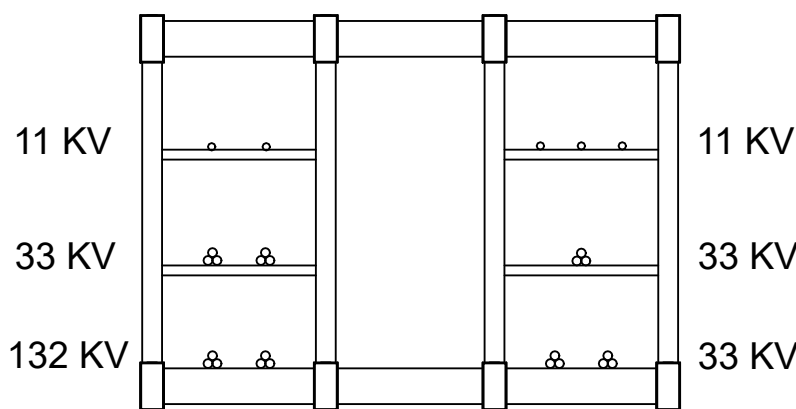
DETAILS OF HINGE SUPPORT AT B



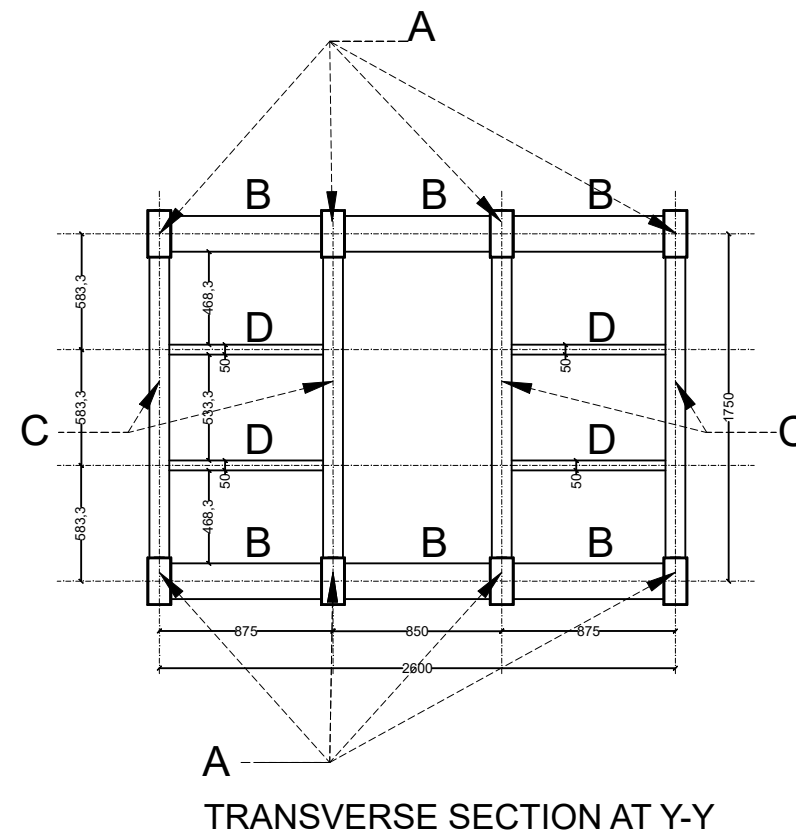
VIEW Q2-Q2

- NOTES:
1. STRUCTURAL STEEL SECTIONS (RHS & SHS) ARE OF YST 310 GRADE STEEL. CONFORMING TO IS 1181:2014.
 2. STEEL OF GRADE E 250 TO BE USED IN THE HINGED SUPPORT AND CONNECTING ARRANGEMENT WITH PIPES. CONFORMING TO IS 2062:2011.
 3. RECESS OF 3 mm ON EITHER SIDE IS TO BE LEFT IN SUPPORTING PLATES FOR PLACEMENT OF PIN INSIDE IT.
 4. RECESS OF 2 mm TO BE LEFT IN BETWEEN DIFFERENT COMPONENTS OF HINGE SUPPORT TO ALLOW ROTATION.
 5. SUITABLE PROVISION IS TO BE MADE TO MAKE THE PIN OF HINGE SUPPORT FRICTIONLESS BY GRINDING AT INTERVALS.
 6. WELD SIZE OF FILLET WELD AT JOINTS OF CONNECTING MEMBERS/STIFFENERS IS 6mm UNLESS OTHERWISE MENTIONED.
 7. ALL BOLTS ARE OF 9.8 GRADE.
 8. ALL WELDS TO BE SHOP WELDS.

- DESIGN PARAMETERS:
1. WIND VELOCITY = 300 km/hour
 2. TERRAIN CATEGORY: 2




GAD SHOWING CABLES



TRANSVERSE SECTION AT Y-Y

STRUCTURAL STEEL SECTIONS

SL.NO.	DESIGNATION	SECTION
1	A	120x240x8
2	B	180x180x6
3	C	100x100x6
4	D	50x50x6

Project title: ENGINEERING,SUPPLY,ERECTION AND COMMISSIONING OF (1) 2X65 MVA 132/33KV GIS S/S AT CUTTACK (MEDICAL) (2) 2 NOS. OF 132 KV BAY EXTENSION WORK FOR BAY EXTENSION WORK FOR BAY EXTENSION ONE AT BIDANASI GRID SUB-STATION & ONE AT BRAJABIHARIPUR GRID SUB-STATION (3) 132 KV UNDERGROUND CABLE CONNECTIVITY FROM BIDANASI GRID & BRAJABIHARIPUR GRID TO PROPOSED GIS GRID (4) 33/11 KV GIS P33 AND (5) 33KV & 11KV UG CABLING SYSTEMS UNDER SCBMCH REDEVELOPMENTAL WORK ON TURNKEYBASIS			
Drawing title: GENERAL ARRANGEMENT DRAWING OF STEEL FOOT BRIDGE FOR TAKING CABLES OVER TALADANDA CANAL			
Client:- ODISHA POWER TRANSMISSION CORPORATION LIMITED BHUBANESWAR			
Contractor:- STERLITE POWER TRANSMISSION LTD. GURUGRAM,HARYANA		Consultant:-  Architectural Consultancy and Engineering Consultancy Pvt. Ltd. Plot No. 10, Sector 10, Gurgaon (Haryana) India	
Drawing No:- ACE/OPTCL/SPTL/SD-01		Date :- 20/03/2024	Revision Date